

# SCHOOL IMPROVEMENT EFFECTIVENESS COMMITTEE

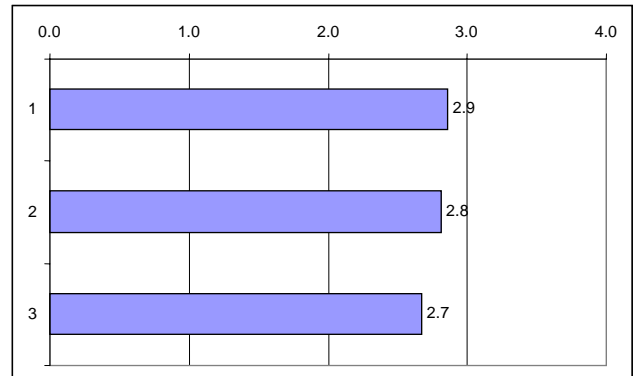
## NSSE Indicators of Quality Instructional Systems: Curriculum, Instruction, and Assessment

Fall 2006 PCHS Faculty Survey Results

### Part A: Indicators of Quality Instructional Systems

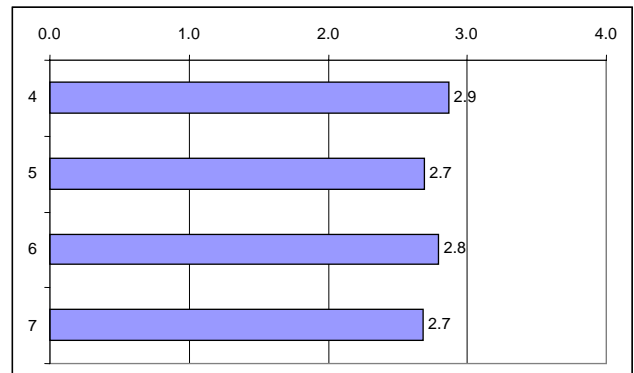
#### Curriculum

1. Develops a Quality Curriculum
2. Ensures Effective Implementation and Articulation of the Curriculum
3. Evaluates and Renews the Curriculum



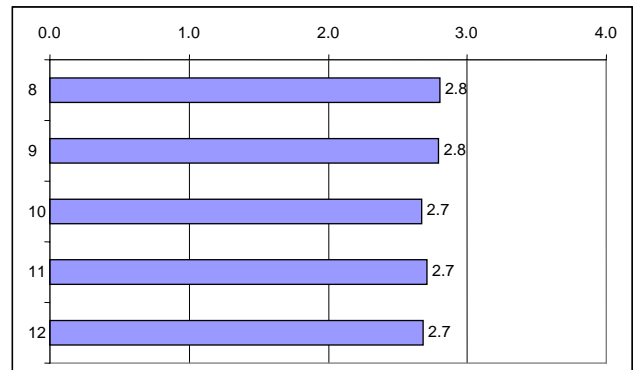
#### Instructional Design

4. Aligns Instruction with the Goals and Expectations for Student Learning
5. Employs Data-Driven Instructional Decision Making
6. Actively Engages Students in the Learning
7. Expands Instructional Support for Student Learning



#### Assessment

8. Clearly Defines the Expectations for Student Learning to be Assessed
9. Establishes the Purpose of the Assessment
10. Selects the Appropriate Method of Assessment
11. Collects a Comprehensive and Representative Sample of Student Achievement
12. Develops Fair Assessments and Avoids Bias and Distortion



#### **Legend**

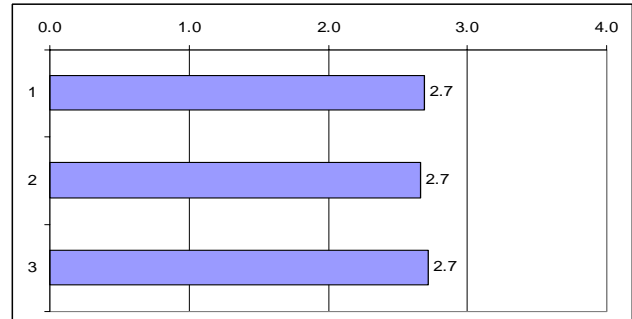
- 4 = Exemplary Level
- 3 = Fully Functioning and Operational
- 2 = Evidence of Progress, but not Fully Operational
- 1 = Low Level of Development and/or Implementation
- 0 = No Evidence of the Indicators of Quality

**SCHOOL IMPROVEMENT EFFECTIVENESS COMMITTEE**  
**NSSE Indicators of Quality Instructional Systems: Curriculum, Instruction, and Assessment**  
 Fall 2006 PCHS Faculty Survey Results

**Part B: Indicators of Quality Organizational Systems**

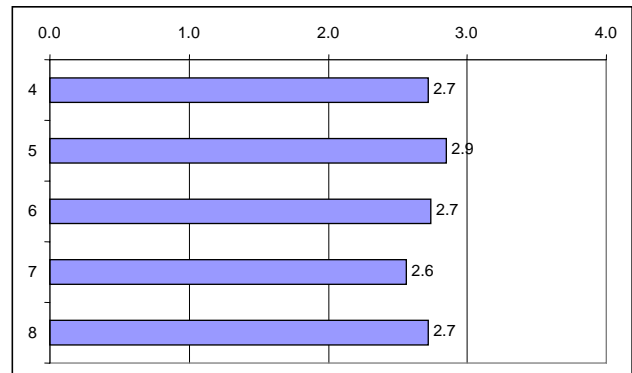
**Educational Agenda: Vision, Mission, Beliefs and Goals**

1. Facilitates a Collaborative Process
2. Shared Vision, Beliefs and Mission
3. Measurable Progress



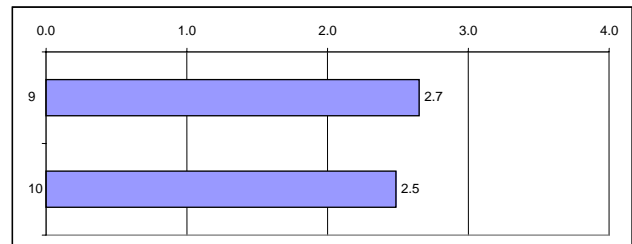
**Leadership for School Improvement**

4. Promotes Quality Instruction
5. Develops Schoolwide Plans for Improvement
6. Employs Effective Decision Making
7. Monitors Progress
8. Provides Skillful Stewardship



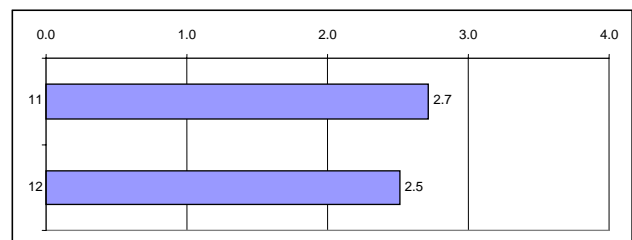
**Community-building**

9. Fosters Community-building
10. Extends the School Community



**Culture of Continuous Improvement and Learning**

11. Commitment to Professional Development
12. Supports Productive Change and Improvement



Legend	
4	= Exemplary Level
3	= Fully Functioning and Operational
2	= Evidence of Progress, but not Fully Operational
1	= Low Level of Development and/or Implementation
0	= No Evidence of the Indicators of Quality